

GIS Division Profile

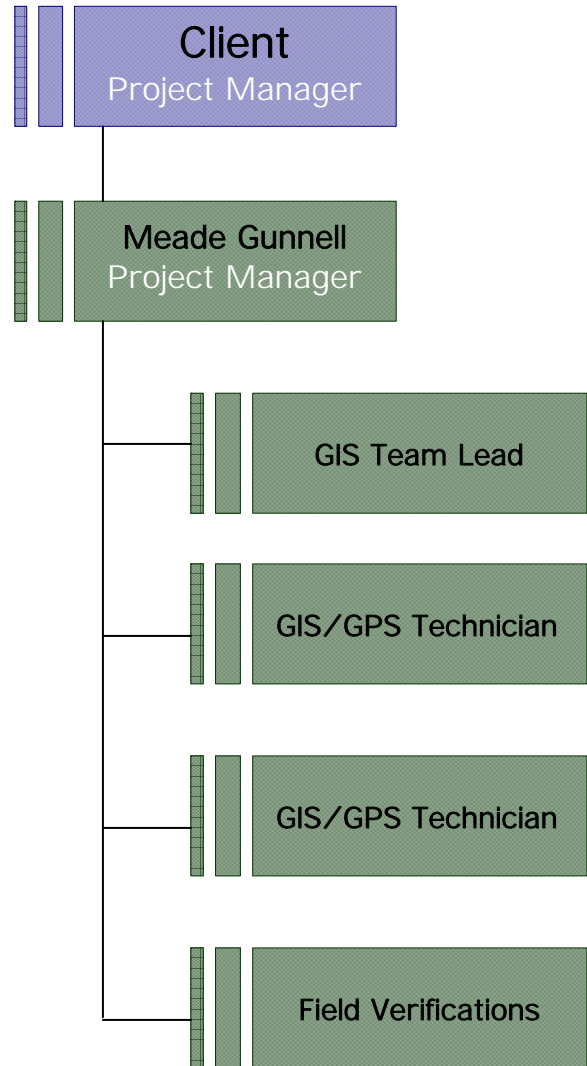
Within today's world of technology, GIS is growing in many different directions requiring a vast array of skills, knowledge, and personnel. Many organizations are finding an increasing need to outsource job duties, projects, and services.

MEADE GUNNELL provides leading-edge solutions to meet the business needs of a variety of agencies. Our GIS Division offers a suite of solutions and services to include project management, database development/data capture (i.e. water, sewer and storm water inventory), data integration, analysis, needs assessments, technical expertise, as well as planning and spatial database management solutions that automate and integrate the collection and flow of information within land agencies.

Project Team Experience

MEADE GUNNELL has formulated an experienced team to meet your organization's needs and to provide timely, cost-effective, and quality professional services for your project. Our Project Manager will "partner" with your organization's Project Manager to be sure all objectives and expectations are met. GIS data capture efforts will be led by our GIS Team Lead, who has extensive geospatial data collection and capture experience. Our Field Verification personnel is a PLS with years of surveying/field verification experience including topographic, boundary and as-built. Our team was formulated to meet the key qualities that are essential to this project.

Organizational Chart



Summary

MEADE GUNNELL has a positive reputation for delivering projects. We communicate our expectations, and the importance of (seamlessly) delivering client objectives when we retain the services of outside resources. Our team has **100%** small business enterprise (**SBE**) status with the City of Charlotte and **100%** of our work is based in the Charlotte area.

Thank you for your consideration, and the MEADE GUNNELL team would be pleased to be selected for partnership with your organization to deliver this important project