

## CIVIL ENGINEERING DIVISION PROFILE

Today, rapid land consumption and a vast sea of regulations and permits make site development projects more challenging. At **MEADE GUNNELL** engineering & surveying, we combine technical expertise with an in-depth regulatory knowledge to achieve successful project implementation. We know public infrastructure, and we understand the importance of the proposed improvements relative to the greater system. We have the competence to perform the scope of work, and the commitment to deliver a successful project.

### Project Team Experience

**MEADE GUNNELL** has formulated an experienced team to meet your organization's needs and to provide timely, cost-effective, and quality professional services for your project. Our Project Manager will "partner" with your organization's Project Manager to be sure all objectives and expectations are met. Much of our success can be attributed to our unique staff who are local professionals that have worked together for a combined experience of 289 years.

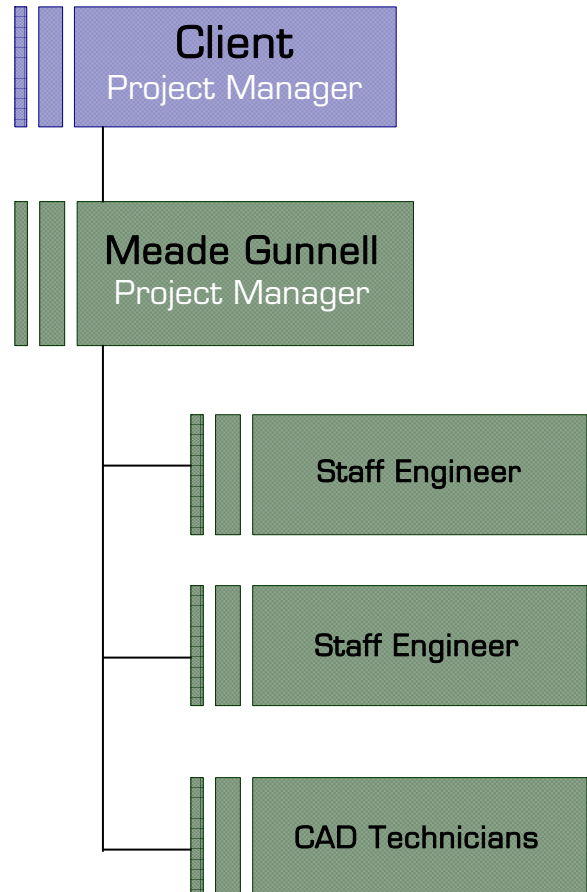
### Fields of Practice

Annexation Coordination  
Bio-Retention  
Construction Administration  
Due Diligence  
Earthwork Calculations  
Grading Design  
Inspections  
Low Impact Design  
Master Planning  
Rezoning Coordination  
Roadway/Highway Design  
Sediment/Erosion Control  
Site Feasibility Studies  
Site Planning  
Storm Water Management  
Subdivision Planning  
Utility Design

## Core Strengths

- Commitment to Excellence
- Experienced Expert Talent
- Straight Forward Approach
- Here Today, Here Tomorrow
- Quick Delivery
- Unparalleled Quality
- Reliability
- Flexibility

## Organizational Chart



## Summary

**MEADE GUNNELL** has a positive reputation for delivering projects. We communicate our expectations, and the importance of (seamlessly) delivering client objectives when we retain the services of outside resources.

*Thank you for your consideration, and the **MEADE GUNNELL** team would be pleased to be selected for partnership with your organization to deliver this important project.*